

PRELP Antibody (C-term)
Purified Rabbit Polyclonal Antibody (Pab)
Catalog # AP6665b

Specification

PRELP Antibody (C-term) - Product Information

Application	FC, IHC-P, WB,E
Primary Accession	P51888
Reactivity	Human
Host	Rabbit
Clonality	Polyclonal
Isotype	Rabbit IgG
Calculated MW	43810
Antigen Region	257-286

PRELP Antibody (C-term) - Additional Information

Gene ID 5549

Other Names

Prolargin, Proline-arginine-rich end leucine-rich repeat protein, PRELP, SLRR2A

Target/Specificity

This PRELP antibody is generated from rabbits immunized with a KLH conjugated synthetic peptide between 257-286 amino acids from the C-terminal region of human PRELP.

Dilution

FC~~1:10~50

IHC-P~~1:50~100

WB~~1:1000

E~~Use at an assay dependent concentration.

Format

Purified polyclonal antibody supplied in PBS with 0.09% (W/V) sodium azide. This antibody is prepared by Saturated Ammonium Sulfate (SAS) precipitation followed by dialysis against PBS.

Storage

Maintain refrigerated at 2-8°C for up to 2 weeks. For long term storage store at -20°C in small aliquots to prevent freeze-thaw cycles.

Precautions

PRELP Antibody (C-term) is for research use only and not for use in diagnostic or therapeutic procedures.

PRELP Antibody (C-term) - Protein Information

Name PRELP

Synonyms SLRR2A

Function May anchor basement membranes to the underlying connective tissue.

Cellular Location

Secreted, extracellular space, extracellular matrix

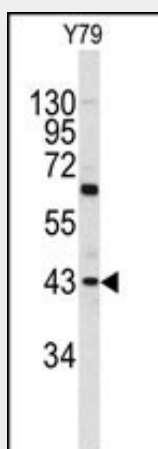
Tissue Location

Connective tissue.

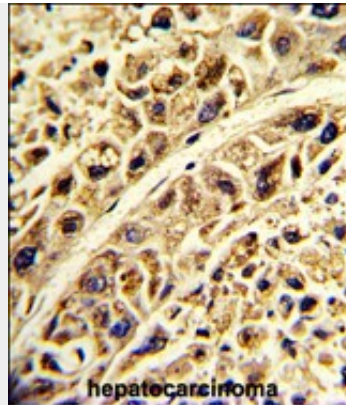
PRELP Antibody (C-term) - Protocols

Provided below are standard protocols that you may find useful for product applications.

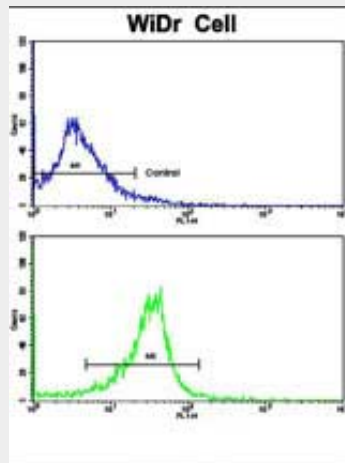
- [Western Blot](#)
- [Blocking Peptides](#)
- [Dot Blot](#)
- [Immunohistochemistry](#)
- [Immunofluorescence](#)
- [Immunoprecipitation](#)
- [Flow Cytometry](#)
- [Cell Culture](#)

PRELP Antibody (C-term) - Images

Western blot analysis of PRELP antibody (C-term) (Cat. #AP6665b) in Y79 cell line lysates (35ug/lane). PRELP (arrow) was detected using the purified Pab.



Formalin-fixed and paraffin-embedded human hepatocarcinoma with PRELP Antibody (C-term), which was peroxidase-conjugated to the secondary antibody, followed by DAB staining. This data demonstrates the use of this antibody for immunohistochemistry; clinical relevance has not been evaluated.



Flow cytometric analysis of wiDr cells using PRELP Antibody (C-term)(bottom histogram) compared to a negative control cell (top histogram). FITC-conjugated goat-anti-rabbit secondary antibodies were used for the analysis.

PRELP Antibody (C-term) - Background

PRELP is a leucine-rich repeat protein present in connective tissue extracellular matrix. This protein functions as a molecule anchoring basement membranes to the underlying connective tissue. This protein has been shown to bind type I collagen to basement membranes and type II collagen to cartilage. It also binds the basement membrane heparan sulfate proteoglycan perlecan. This protein is suggested to be involved in the pathogenesis of Hutchinson-Gilford progeria (HGP), which is reported to lack the binding of collagen in basement membranes and cartilage.

PRELP Antibody (C-term) - References

- Grover,J., Matrix Biol. 26 (2), 140-143 (2007)
- Johnson,J.M., Mol. Vis. 12, 1057-1066 (2006)
- Lewis,M., Ageing Res. Rev. 2 (1), 95-105 (2003)